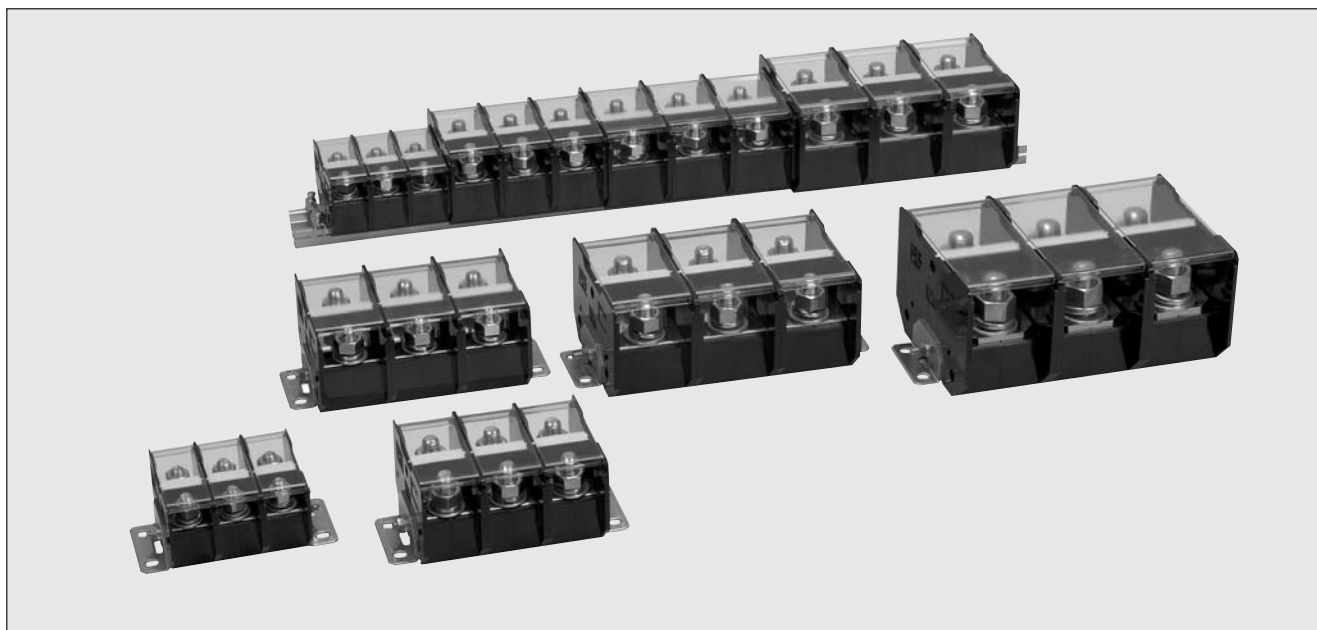


# Stud terminal block

Cope to 175A~600A

## TSH Series



### □ Features

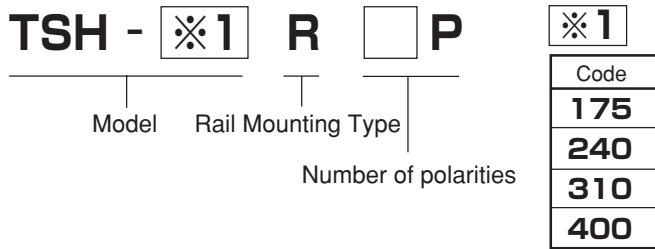
- Terminal block, termination and terminal cover incombustibility grade UL94V-0.
- Rated insulation voltage is 600V. Perfect for high withstand voltage and high insulation use.
- Since denatured PPE resin is used as the insulation material, correspondence to mechanical vibration and shock is excellent.
- Mounting and dismounting of terminal cover and name tag are simple.
- Rail-mounting and bolt assembly systems are available (However, TSH-600 is bolt system only.)
- Rail is high strength type AR-FH.
- JISC 2805 (Crimp terminal for copper wire) standard compliant

### NOTICE

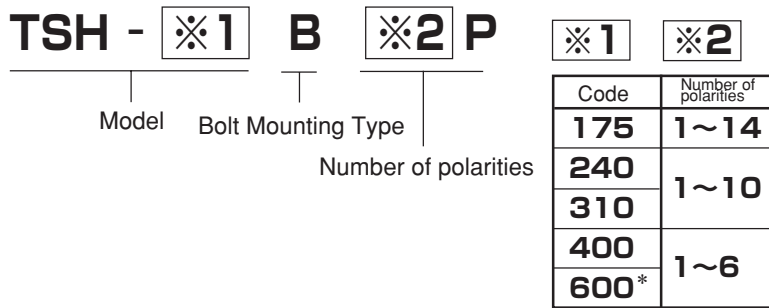
- The conduction current of the terminal block is different depending on the usage conditions (type of electric wire, number of strands, ambient temperature, etc.).

## ❖ Model Designation

### ■ Rail-mounted Finished Product (with terminal protection cover)

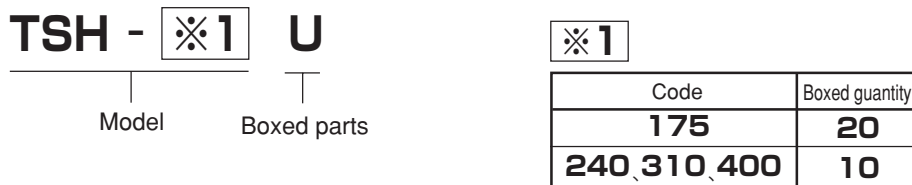


### ■ Bolt Mounted Finished Product (with terminal protection cover)

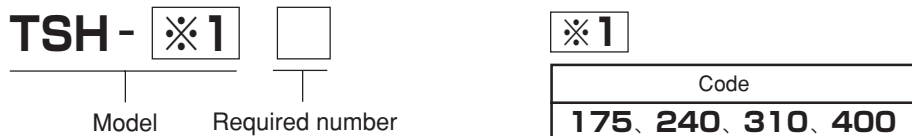


\* The TS-600 are sold as bolt assembly finished product only.

### ■ Boxed parts model designation



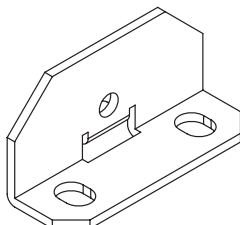
### ■ Stand alone model designation



● Bolt type Metal fitting

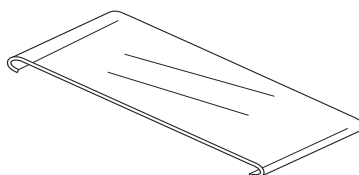
Item \ Model	TSH-SB				
Matching Terminal Block	TSH-175B	TSH-240B	TSH-310B	TSH-400B	TSH-600B
Thickness	17mm				
Sales Unit	10 pieces				
Weight (per pcs)	25.3 g				

※Use M5 assembly stud.



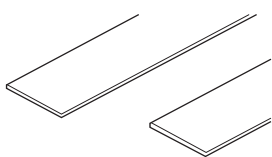
● Terminal Protection Cover

Item \ Model	TSH-C175	TSH-C240	TSH-C310	TSH-C400	TSH-C600
Matching Terminal Block	TSH-175	TSH-240	TSH-310	TSH-400	TSH-600
Length	1 piece for one polarity				
Sales Unit	10 pieces				
Weight (1 pieces)	2.9 g	4.3g	5.3 g	10.1g	13.7g



● Legend Tag

▼ TS-M800F (Flat)



Width× Length/10mm × 900mm  
Thickness/0.5mm  
Sales Unit/10 pieces  
Weight (per 1 piece)/6g

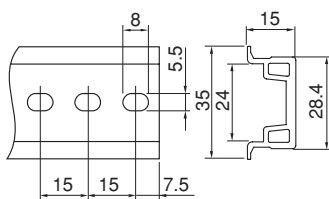
▼ TS-M800W (Roll)



Width× Length/10mm × 25m  
Thickness/0.5mm  
Sales Unit/1roll  
Weight (per 1 piece)/192g

● Rail

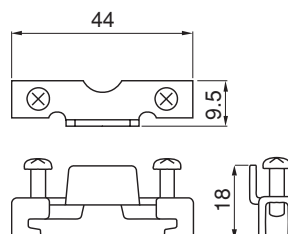
▼ AR-FH



Length/1000mm  
Sales Unit/5 pieces  
Weight (per 1 piece)/365g

● Metal Fitting

▼ MF-THC



Sales Unit/10 pieces  
Weight (per 1 piece)/11g

## ❖ Specifications

Model		TSH-175	TSH-240	TSH-310	TSH-400	TSH-600
Item	Insulation Voltage	600V				
	Current Capacity	175A	240A	310A	400A	600A
Matching Wire		60mm <sup>2</sup>	100mm <sup>2</sup>	150mm <sup>2</sup>	200mm <sup>2</sup>	325mm <sup>2</sup>
Connectable Wire and Current Capacity by Size		38mm <sup>2</sup> — 150A 22mm <sup>2</sup> — 90A	38mm <sup>2</sup> — 150A 22mm <sup>2</sup> — 90A	100mm <sup>2</sup> — 240A 60mm <sup>2</sup> — 175A	150mm <sup>2</sup> — 310A 100mm <sup>2</sup> — 240A	200mm <sup>2</sup> — 400A 150mm <sup>2</sup> — 310A
Terminal Screw and Bolt		Hexagonal bolt M8×18 Recommended torque: ( 8.9~10.8 N·m )	Hexagonal bolt M10×25 Recommended torque: ( 18~23 N·m )	Hexagonal bolt M10×25 Recommended torque: ( 18~23 N·m )	Hexagonal bolt M12×30 Recommended torque: ( 31.5~39.5 N·m )	Hexagonal bolt M16×40 Recommended torque: ( 78.5~98N·m )
Matching Crimp Contact	Max. Diameter	22.8mm	30mm	38mm	45mm	52mm
	Min. Inside Diameter	φ 8.4mm	φ 10.5mm	φ 10.5mm	φ 13mm	φ 17mm
Pitch between Terminals		27mm	36mm	44mm	53mm	60mm
Number in Package		As many as 20 polarities	As many as 10 polarities			—
Weight (per 1 P)		85.5g	175.7g	214.4g	349.1g	629.8g
Standard Conformity		JIS C 2811 Industrial Terminal Blocks				

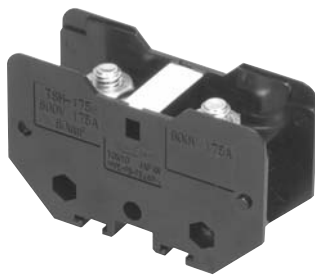
## ❖ Specifications

Insulation Resistance	Between live parts and ground 500MΩ or more measured by 500V DC megohmmeter
Withstand Voltage	Between live parts and ground 2500V AC for 1 minute
Operating Environment	Temperature: -10~50°C, Humidity: 45~85%RH (No freezing or condensation)

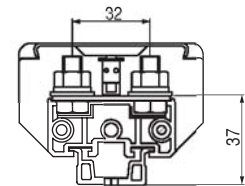
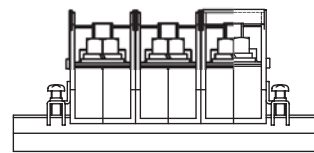
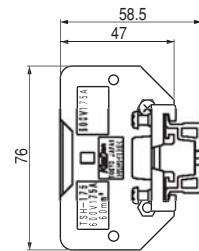
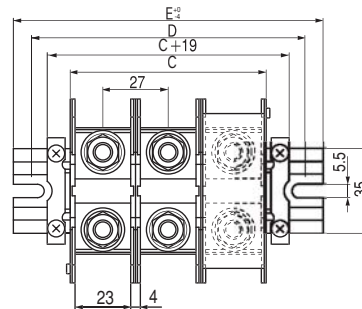
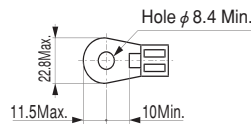
## ❖ Materials

Model		TSH-175	TSH-240	TSH-310	TSH-400	TSH-600
Item	Insulation Holder	Poly phenylene ether resin (black)				UL94V-0
	Terminal Metal	Copper bus bar (Nickel plated)				
Hexagonal bolt		Carbon steel (galvanized and chromate treatment)				
Terminal Metal B		Cold-finished steel plate (galvanized and chromate treatment)				
Terminal Protection Cover		Polycarbonate resin (transparent)				UL94V-0
Legend Tag		Vinyl chloride resin (white) 10mm wide				UL94V-0
Metal End		Cold-finished steel plate (galvanized and chromate treatment)				
Rail		Aluminum				

<b>TSH-175R□P</b>	Matching Wire	175A:60mm <sup>2</sup>	Terminal Screws	M8/Hexagonal bolt	With cover /name tag
-------------------	---------------	------------------------	-----------------	-------------------	----------------------



• Applicable crimp terminal



Rated insulation voltage	600V
Connectable wire and conduction current by size	60mm <sup>2</sup> — 175A / 38mm <sup>2</sup> — 150A 122mm <sup>2</sup> — 60A
Recommended terminal screw tightening torque	8.9~10.8N·m
Standard Conformity	JIS C 2811 Industrial Terminal Blocks

● Accessories table (See N-10)

\* Amount required is when name tag length is 900mm or less.

		Required amount *
Terminal Protection Cover <b>TSH-C175</b>	Sales Unit:10 pcs/ Weight (per pc):2.9g	1
Legend Tag (Flat) <b>TS-M800F</b>	Width x length:10mmX900mm/Thickness:0.5mm Sales Unit:10 pcs/ Weight (per pc):6g	1
Legend Tag (Roll) <b>TS-M800W</b>	WidthX Length:10mmX25m/Thickness:0.5mm Sales Unit:1 Roll/Weight:192g	—
FH type DIN rail <b>AR-FH</b>	Length:1m/Sales Unit:5 pcs/ Weight (per pc):365g	1
Terminal hardware for LHFH type DIN rail <b>MF-THC</b>	Sales Unit:10pcs/ Weight (per pc):11g	2

● “D、E” dimensions (dimension:mm)

Number of polarities	D	E <sup>+0</sup> / <sub>-4</sub>
1P	60	75
2P	90	105
3P	120	135
4P	135	150
5P	165	180
6P	195	210
7P	225	240
8P	225	270
9P	270	285
10P	300	315
11P	330	345
12P	360	375
13P	390	405
14P	405	420
15P	435	450

Number of polarities	D	E <sup>+0</sup> / <sub>-4</sub>
16P	465	480
17P	495	510
18P	525	540
19P	540	555
20P	570	585

● TSH-175R dimensions computation expression (units:mm)

Basic expression:  $27 \times P + 26$

P: Number of polarities

D dimension (mounting dimension): Multiple of 15 larger than value obtained from basic expression

E dimension (total length of aluminum rail):  $D + 15$

\*This computational expression is up to 20P. For 21P and greater, please consult us separately.

Please see page N-21 for the D and E dimensions computational expressions when multiple types (TSH-175R+TSH-240R, etc.) were assembled on one rail.

● TSH-175R weight computational expression (units: g)

$99 \times P + 50$

P: Number of polarities

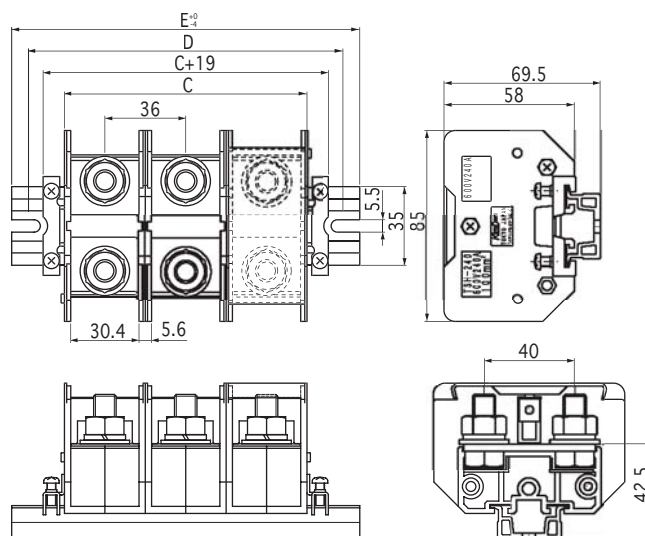
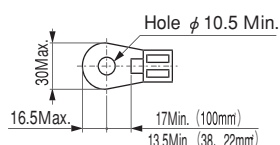
**NOTICE**

- The conduction current of the terminal block is different depending on the usage conditions (type of electric wire, number of strands, ambient temperature, etc.).

<b>TSH-240R□P</b>	Matching Wire	240A:100mm <sup>2</sup>	Terinal Screws	M10/Hexagonal bolt	With cover /name tag
-------------------	---------------	-------------------------	----------------	--------------------	----------------------



• Applicable crimp terminal



Rated insulation voltage	600V
Connectable wire and conduction current by size	100mm <sup>2</sup> —240A/38mm <sup>2</sup> —150A 22mm <sup>2</sup> —90A
Recommended terminal screw tightening torque	18~23N·m
Standard Conformity	JIS C 2811 Industrial Terminal Blocks

#### ● Accessories table (See N-10)

\*Amount required is when name tag length is 900mm or less.

		Required * amount
Terminal Protection Cover <b>TSH-C240</b>	Sales Unit:10 pcs/ Weight (per pc):4.3g	1
Legend Tag (Flat) <b>TS-M800F</b>	Width x length:10mm×900mm/Thickness:0.5mm Sales Unit:10 pcs/ Weight (per pc):6g	1
Legend Tag (Roll) <b>TS-M800W</b>	Width× Length:10mm×25m/Thickness:0.5mm Sales Unit:1 Roll/Weight:192g	—
FH type DIN rail <b>AR-FH</b>	Length:1m/Sales Unit:5 pcs/ Weight (per pc):365g	1
Terminal hardware for L/H/FH type DIN rail <b>MF-THC</b>	Sales Unit:10pcs/ Weight (per pc):11g	2

#### ● “D、E” dimensions (dimension:mm)

Number of polarities	D	E +0 -4
<b>1P</b>	75	90
<b>2P</b>	105	120
<b>3P</b>	135	150
<b>4P</b>	180	195
<b>5P</b>	210	225
<b>6P</b>	255	270
<b>7P</b>	285	300
<b>8P</b>	315	330
<b>9P</b>	360	375
<b>10P</b>	390	405
<b>11P</b>	435	450
<b>12P</b>	465	480
<b>13P</b>	495	510
<b>14P</b>	540	555
<b>15P</b>	570	585

Number of polarities	D	E +0 -4
<b>16P</b>	615	630
<b>17P</b>	645	660
<b>18P</b>	675	690
<b>19P</b>	720	735
<b>20P</b>	750	765

#### ● TSH-240R dimensions computation expression (units:mm)

Basic expression:  $36 \times P + 26$

P: Number of polarities

D dimension (mounting dimension): Multiple of 15 larger than value obtained from basic expression

E dimension (total length of aluminum rail):  $D + 15$

\*T his computational expression is up to 20P. For 21P and greater, please consult us separately.

Please see page N-21 for the D and E dimensions computational expressions when multiple types (TSH-175R+TSH-240R, etc.) were assembled on one rail.

#### ● TSH-240R weight co mputational expression (units: g)

$195 \times P + 50$

P: Number of polarities

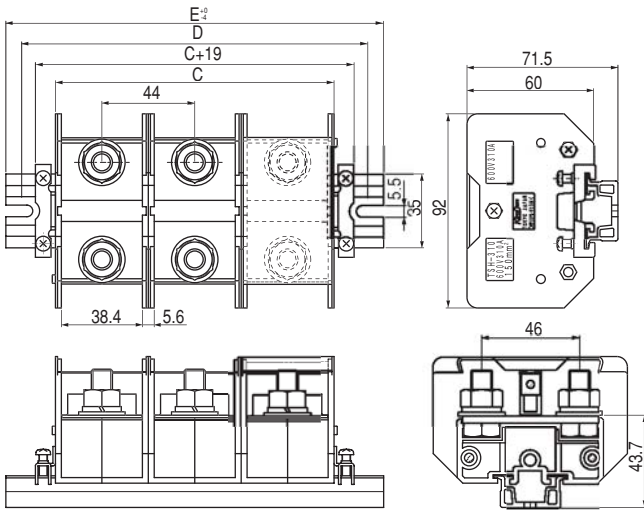
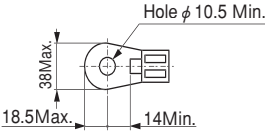
### NOTICE

- The conduction current of the terminal block is different depending on the usage conditions (type of electric wire, number of strands, ambient temperature, etc.).

<b>TSH-310R□P</b>	Matching Wire	310A:150mm <sup>2</sup>	Terminal Screws	M10/Hexagonal bolt	With cover /name tag
-------------------	---------------	-------------------------	-----------------	--------------------	----------------------



• Applicable crimp terminal



Rated insulation voltage	600V
Connectable wire and conduction current by size	150mm <sup>2</sup> —310A/100mm <sup>2</sup> —240A 60mm <sup>2</sup> —175A
Recommended terminal screw tightening torque	18~23N·m
Standard Conformity	JIS C 2811 Industrial Terminal Blocks

● Accessories table (See N-10)

\*Amount required is when name tag length is 900mm or less.

		Required * amount
Terminal Protection Cover <b>TSH-C310</b>	Sales Unit:10 pcs/ Weight (per pc):5.3g	1
Legend Tag (Flat) <b>TS-M800F</b>	Width x length:10mmX900mm/Thickness:0.5mm Sales Unit:10 pcs/ Weight (per pc):6g	1
Legend Tag (Roll) <b>TS-M800W</b>	WidthX Length:10mmX25m/Thickness:0.5mm Sales Unit:1 Roll/Weight:192g	—
FH type DIN rail <b>AR-FH</b>	Length:1m/Sales Unit:5 pcs/ Weight (per pc):365g	1
Terminal hardware for LH/FH type DIN rail <b>MF-THC</b>	Sales Unit:10pcs/ Weight (per pc):11g	2

● “D、E”dimensions (dimension:mm)

Number of polarities	D	E <sup>+0 -4</sup>
<b>1P</b>	75	90
<b>2P</b>	120	135
<b>3P</b>	165	180
<b>4P</b>	210	225
<b>5P</b>	255	270
<b>6P</b>	300	315
<b>7P</b>	345	360
<b>8P</b>	390	405
<b>9P</b>	435	450
<b>10P</b>	480	495
<b>11P</b>	525	540
<b>12P</b>	555	570
<b>13P</b>	600	615
<b>14P</b>	645	660
<b>15P</b>	690	705

● TSH-310R dimensions computation expression (units:mm)

Basic expression: 44XP+26 P: Number of polarities  
D dimension (mounting dimension): Multiple of 15 larger than value obtained from basic expression  
E dimension (total length of aluminum rail): D+15

\*T his computational expression is up to 15P. For 16P and greater, please consult us separately.

Please see page N-21 for the D and E dimensions computational expressions when multiple types (TSH-175R+TSH-240R, etc.) were assembled on one rail.

● TSH-310R weight co mputational expression (units: g)

237XP+50 P: Number of polarities

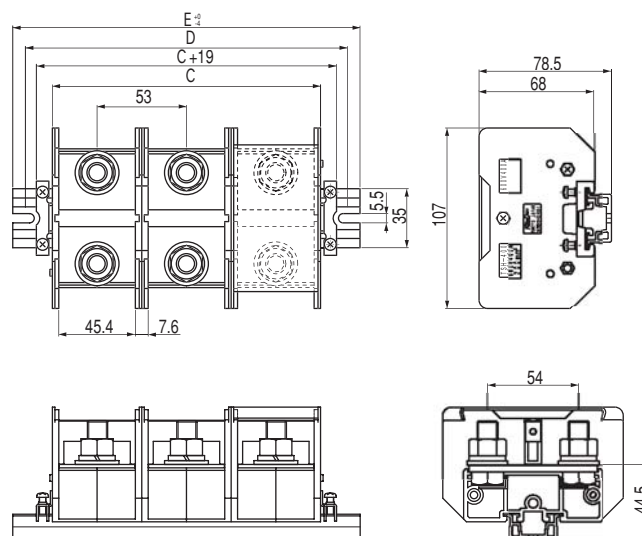
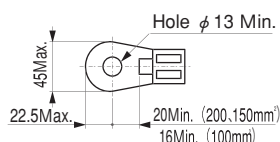
**NOTICE**

- The conduction current of the terminal block is different depending on the usage conditions (type of electric wire, number of strands, ambient temperature, etc.).

<b>TSH-400R□P</b>	Matching wire	400A:200mm <sup>2</sup>	Terminal Screws	M12/Hexagonal bolt	With cover /name tag
-------------------	---------------	-------------------------	-----------------	--------------------	----------------------



• Applicable crimp terminal



Rated insulation voltage	600V
Connectable wire and conduction current by size	200mm <sup>2</sup> —400A / 150mm <sup>2</sup> —310A 100mm <sup>2</sup> —240A
Recommended terminal screw tightening torque	31.5~39.5N·m
Standard Conformity	JIS C 2811 Industrial Terminal Blocks

● Accessories table (See N-10)

\*Amount required is when name tag length is 900mm or less.

		Required * amount
Terminal Protection Cover <b>TSH-C400</b>	Sales Unit:10 pcs / Weight (per pc):10.1g	1
Legend Tag (Flat) <b>TS-M800F</b>	Width x length:10mmX900mm / Thickness:0.5mm Sales Unit:10 pcs / Weight (per pc):6g	1
Legend Tag (Roll) <b>TS-M800W</b>	WidthX Length:10mmX25m / Thickness:0.5mm Sales Unit:1 Roll / Weight:192g	—
FH type DIN rail <b>AR-FH</b>	Length:1m / Sales Unit:5 pcs / Weight (per pc):365g	1
Terminal hardware for L/H/FH type DIN rail <b>MF-THC</b>	Sales Unit:10pcs / Weight (per pc):11g	2

● “D、E” dimensions (dimension:mm)

Number of polarities	D	E <sup>+0</sup> / <sub>-4</sub>
<b>1P</b>	90	105
<b>2P</b>	135	150
<b>3P</b>	195	210
<b>4P</b>	240	255
<b>5P</b>	300	315
<b>6P</b>	345	360
<b>7P</b>	405	420
<b>8P</b>	450	465
<b>9P</b>	510	525
<b>10P</b>	570	585

● TSH-400R dimensions computation expression (units:mm)

Basic expression:  $53 \times P + 26$

P: Number of polarities

D dimension (mounting dimension): Multiple of 15 larger than value obtained from basic expression

E dimension (total length of aluminum rail):  $D + 15$

\*T his computational expression is up to 10P. For 11P and greater, please consult us separately.

Please see page N-21 for the D and E dimensions computational expressions when multiple types (TSH-175R+TSH-240R, etc.) were assembled on one rail.

● TSH-400R weight co mputational expression (units: g)

$380 \times P + 50$

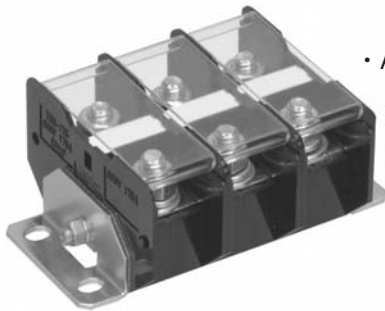
P: Number of polarities

**NOTICE**

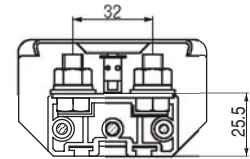
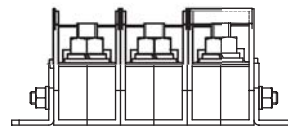
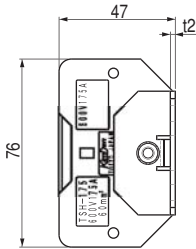
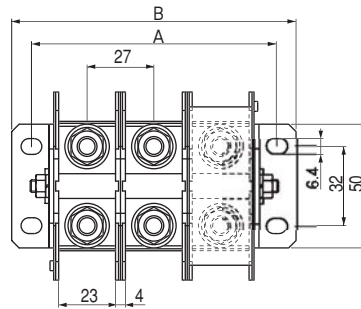
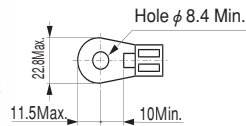
- The conduction current of the terminal block is different depending on the usage conditions (type of electric wire, number of strands, ambient temperature, etc.).



<b>TSH-175B□P</b>	Matching Wire	175A:60mm <sup>2</sup>	Terinal Screws	M8/Hexagonal bolt	With cover /name tag
-------------------	---------------	------------------------	----------------	-------------------	----------------------



• Applicable crimp terminal



Rated insulation voltage	600V
Connectable wire and conduction current by size	60mm <sup>2</sup> —175A/38mm <sup>2</sup> —150A 122mm <sup>2</sup> —60A
Recommended terminal screw tightening torque	8.9~10.8N·m
Standard Conformity	JIS C 2811 Industrial Terminal Blocks

● Accessories table (See N-10)

Terminal Protection Cover <b>TSH-C175</b>	Sales Unit:10 pcs/ Weight (per pc):2.9g
Legend Tag (Flat) <b>TS-M800F</b>	Width x length:10mm×900mm/Thickness:0.5mm Sales Unit:10 pcs/ Weight (per pc):6g
Legend Tag (Roll) <b>TS-M800W</b>	Width× Length:10mm×25m/Thickness:0.5mm Sales Unit:1 Roll/Weight:192g
Bolt type Terminal Metal <b>TSH-SB</b>	Thickness:17mm/Sales Unit:10pcs/ Weight (per pc):25.3g

● “A, B”dimensions (dimension:mm)

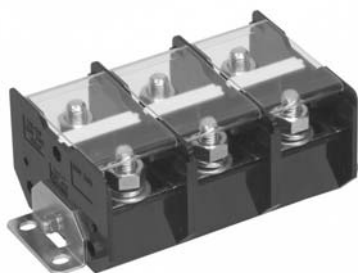
Number of polarities	A	B
<b>1P</b>	45	61
<b>2P</b>	72	88
<b>3P</b>	99	115
<b>4P</b>	126	142
<b>5P</b>	153	196
<b>6P</b>	180	196
<b>7P</b>	207	223
<b>8P</b>	234	250
<b>9P</b>	261	277
<b>10P</b>	288	304
<b>11P</b>	315	331
<b>12P</b>	342	358
<b>13P</b>	369	385
<b>14P</b>	396	412

- Bolt assembly finished product weight computational expression (units: g)  
94×P+65
- P: Number of polarities

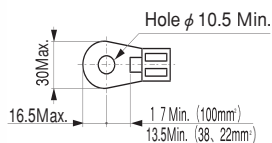
**NOTICE**

- The conduction current of the terminal block is different depending on the usage conditions (type of electric wire, number of strands, ambient temperature, etc.).

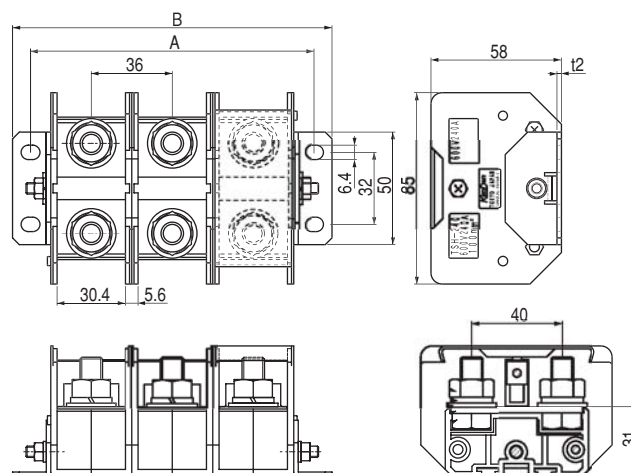
<b>TSH-240B□P</b>	Matching Wire	240A:100mm <sup>2</sup>	Terinal Screws	M10/Hexagonal bolt	With cover /name tag
-------------------	---------------	-------------------------	----------------	--------------------	----------------------



• Applicable crimp terminal



Rated insulation voltage	600V
Connectable wire and conduction current by size	100mm <sup>2</sup> —240A/38mm <sup>2</sup> —150A 22mm <sup>2</sup> —90A
Recommended terminal screw tightening torque	18~23N·m
Standard Conformity	JIS C 2811 Industrial Terminal Blocks



● Accessories table (See N-10)

Terminal Protection Cover <b>TSH-C240</b>	Sales Unit:10 pcs/ Weight (per pc):4.3g
Legend Tag (Flat) <b>TS-M800F</b>	Width x length:10mm×900mm/Thickness:0.5mm Sales Unit:10 pcs/ Weight (per pc):6g
Legend Tag (Roll) <b>TS-M800W</b>	Width× Length:10mm×25m/Thickness:0.5mm Sales Unit:1 Roll/Weight:192g
Bolt type Terminal Metal <b>TSH-SB</b>	Thickness:17mm/Sales Unit:10pcs/ Weight (per pc):25.3g

● “A、B” dimensions (dimension:mm)

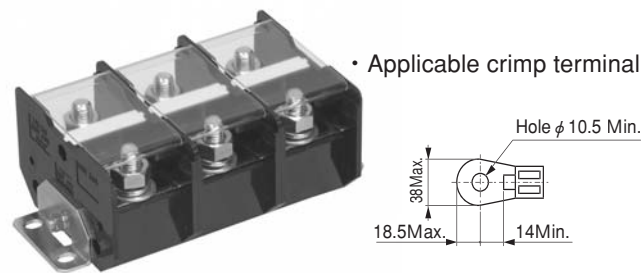
Number of polarities	A	B
<b>1P</b>	54	70
<b>2P</b>	90	106
<b>3P</b>	126	142
<b>4P</b>	162	178
<b>5P</b>	198	214
<b>6P</b>	234	250
<b>7P</b>	270	286
<b>8P</b>	306	322
<b>9P</b>	342	358
<b>10P</b>	378	394

- Bolt assembly finished product weight computational expression (units: g)  
 $190 \times P + 65$  P: Number of polarities

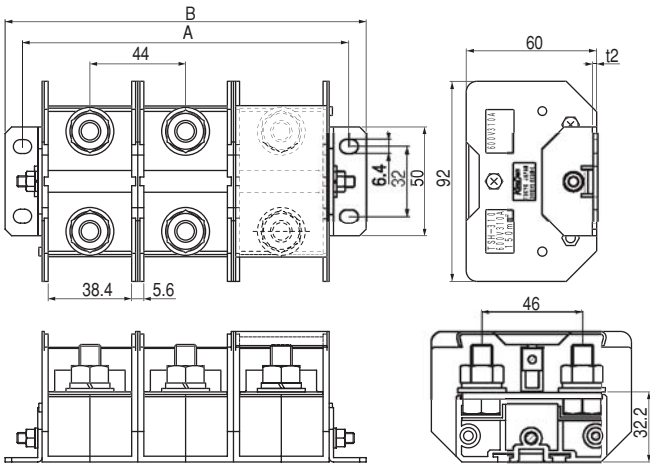
**NOTICE**

- The conduction current of the terminal block is different depending on the usage conditions (type of electric wire, number of strands, ambient temperature, etc.).

<b>TSH-310B□P</b>	Matching Wire	310A:150mm <sup>2</sup>	Terinal Screws	M10/Hexagonal bolt	With cover /name tag
-------------------	---------------	-------------------------	----------------	--------------------	----------------------



Rated insulation voltage	600V
Connectable wire and conduction current by size	150mm <sup>2</sup> —310A／100mm <sup>2</sup> —240A 60mm <sup>2</sup> —175A
Recommended terminal screw tightening torque	18~23N·m
Standard Conformity	JIS C 2811 Industrial Terminal Blocks



● Accessories table (See N-10)

Terminal Protection Cover <b>TSH-C310</b>	Sales Unit:10 pcs／ Weight (per pc):5.3g
Legend Tag (Flat) <b>TS-M800F</b>	Width x length:10mmX900mm／Thickness:0.5mm Sales Unit:10 pcs／ Weight (per pc):6g
Legend Tag (Roll) <b>TS-M800W</b>	WidthX Length:10mmX25m／Thickness:0.5mm Sales Unit:1 Roll／Weight:192g
Bolt type Terminal Metal <b>TSH-SB</b>	Thickness:17mm／Sales Unit:10pcs／ Weight (per pc):25.3g

● “A, B”dimensions (dimension:mm)

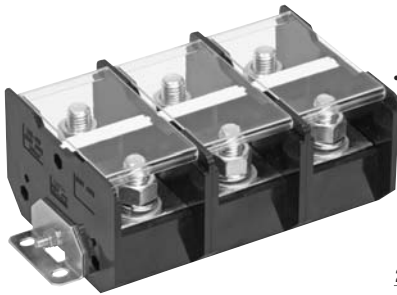
Number of polarities	A	B
<b>1P</b>	62	78
<b>2P</b>	106	122
<b>3P</b>	150	166
<b>4P</b>	194	210
<b>5P</b>	238	254
<b>6P</b>	282	298
<b>7P</b>	326	342
<b>8P</b>	370	386
<b>9P</b>	414	430
<b>10P</b>	458	474

- Bolt assembly finished product weight computational expression (units: g)  
 $232 \times P + 65$  P: Number of polarities

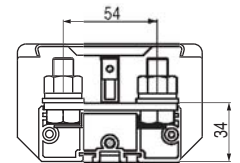
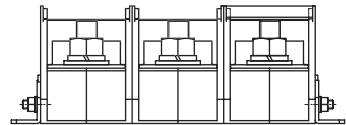
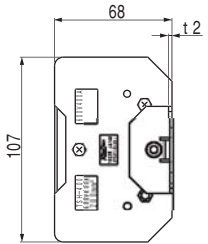
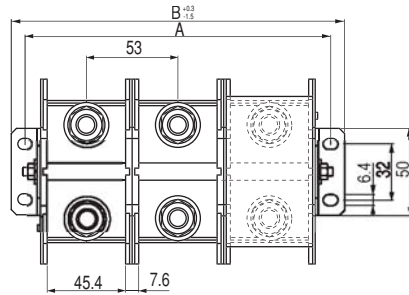
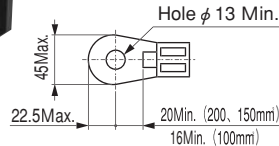
NOTICE

- The conduction current of the terminal block is different depending on the usage conditions (type of electric wire, number of strands, ambient temperature, etc.).

<b>TSH-400B□P</b>	Matching Wire	400A:200mm <sup>2</sup>	Terminal Screws	M12/Hexagonal bolt	With cover /name tag
-------------------	---------------	-------------------------	-----------------	--------------------	----------------------



• Applicable crimp terminal



Rated insulation voltage	600V
Connectable wire and conduction current by size	200mm <sup>2</sup> —400A / 150mm <sup>2</sup> —310A 100mm <sup>2</sup> —240A
Recommended terminal screw tightening torque	31.5~39.5N·m
Standard Conformity	JIS C 2811 Industrial Terminal Blocks

● Accessories table (See N-10)

Terminal Protection Cover <b>TSH-C400</b>	Sales Unit:10 pcs / Weight (per pc):10.1g
Legend Tag (Flat) <b>TS-M800F</b>	Width x length:10mmX900mm / Thickness:0.5mm Sales Unit:10 pcs / Weight (per pc):6g
Legend Tag (Roll) <b>TS-M800W</b>	WidthX Length:10mmX25m / Thickness:0.5mm Sales Unit:1 Roll / Weight:192g
Bolt type Terminal Metal <b>TSH-SB</b>	Thickness:17mm / Sales Unit:10pcs / Weight (per pc):25.3g

● “A, B” dimensions (dimension:mm)

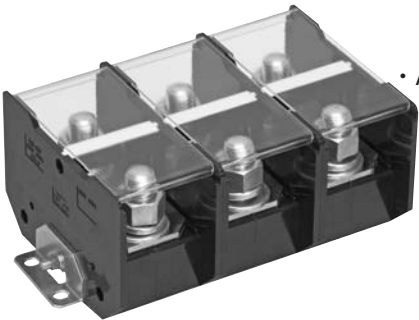
Number of polarities	A	B
<b>1P</b>	71	87
<b>2P</b>	124	140
<b>3P</b>	177	193
<b>4P</b>	230	246
<b>5P</b>	283	299
<b>6P</b>	336	352

● Bolt assembly finished product weight computational expression (units: g)  
 $375 \times P + 65$  P: Number of polarities

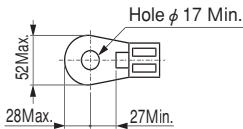
**NOTICE**

- The conduction current of the terminal block is different depending on the usage conditions (type of electric wire, number of strands, ambient temperature, etc.).

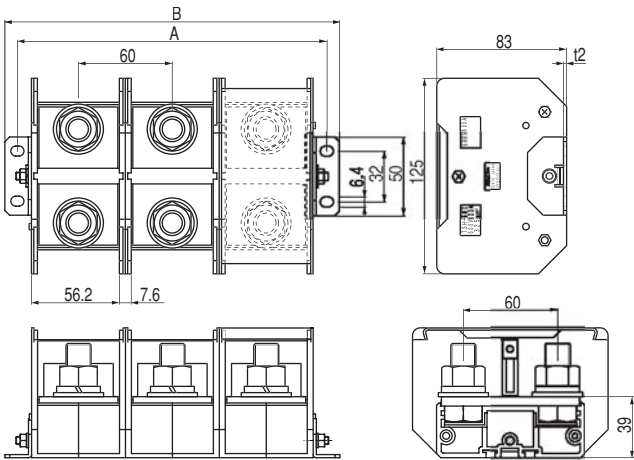
<b>TSH-600B□P</b>	Matching Wire	600A:325mm <sup>2</sup>	Terinal Screws	M16/Hexagonal bolt	With cover /name tag
-------------------	---------------	-------------------------	----------------	--------------------	----------------------



• Applicable crimp terminal



Rated insulation voltage	600V
Connectable wire and conduction current by size	325mm <sup>2</sup> —600A／200mm <sup>2</sup> —400A 310mm <sup>2</sup> —150A
Recommended terminal screw tightening torque	78.5～98N・m
Standard Conformity	JIS C 2811 Industrial Terminal Blocks



● Accessories table (See N-10)

Terminal Protection Cover	Sales Unit:10 pcs／
<b>TSH-C600</b>	Weight (per pc):13.1g
Legend Tag (Flat)	Width x length:10mm×900mm／Thickness:0.5mm
<b>TS-M800F</b>	Sales Unit:10 pcs／ Weight (per pc):6g
Legend Tag (Roll)	Width× Length:10mm×25m／Thickness:0.5mm
<b>TS-M800W</b>	Sales Unit:1 Roll／Weight:192g
Bolt type Terminal Metal	Thickness:17mm／Sales Unit:10pcs／
<b>TSH-SB</b>	Weight (per pc):25.3g

● “A、B”dimensions (dimension:mm)

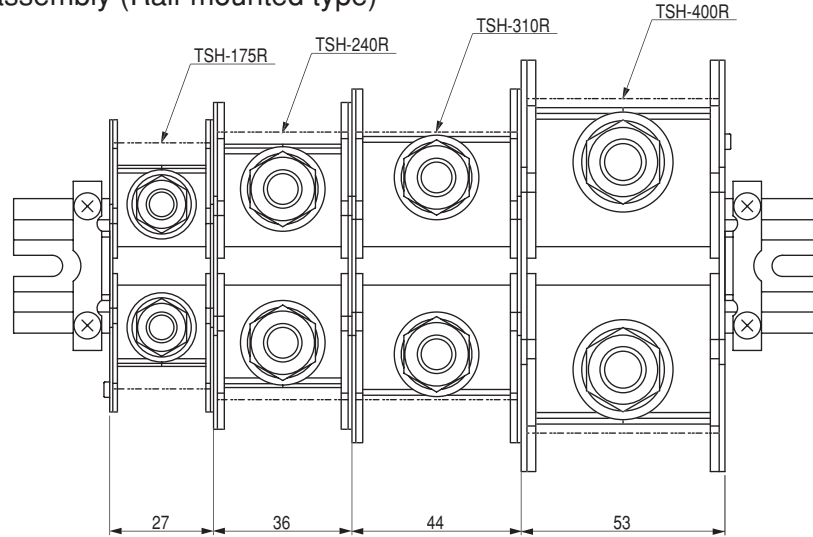
Number of polarities	A	B
<b>1P</b>	78	94
<b>2P</b>	138	154
<b>3P</b>	198	214
<b>4P</b>	258	274
<b>5P</b>	318	334
<b>6P</b>	378	394

● Bolt assembly finished product weight computational expression (units: g)  
669×P+65  
P: Number of polarities

NOTICE

- The conduction current of the terminal block is different depending on the usage conditions (type of electric wire, number of strands, ambient temperature, etc.).

● Example of assembly (Rail-mounted type)



● Rail-mounted finished product dimensions computational expression

- Mounting dimension (D) is an integral multiple of 15mm.

$$D \geq (\text{length of one terminal block pole} \times \text{number of poles}) + (\text{length of terminating TS-S} \square \times 2) + (\text{terminal block stacking error}) \times 1 + (\text{surplus length of terminating hardware}) \times 2$$

\*1: 1mm per 10 poles \*2: 26mm

- Computation example: Computing the TSH-175R-15P+TSH-310-3P+TSH-240R-3P aluminum rail total length.

$$(27 \times 15) + (44 \times 3) + (36 \times 3) + 2 + 26 = 673$$

$$673 \div 15 = 44.87 \text{ Rounded off at least significant digit}$$

$$45 \times 15 \text{mm} = 675 \text{mm (D dimension)}$$

- Total length of aluminum rail (E)  $E = D + 15 \text{mm}$

\*The total length of the AR-LH aluminum rail is 690mm.

● Weight of rail-mounted unit

P: Number of polarities (dimension unit: g)

Model	TSH-175R	TSH-240R	TSH-310R	TSH-400R
Weight	$99 \times P + 50$	$195 \times P + 50$	$237 \times P + 50$	$380 \times P + 50$

● Weight of bolt-mounted unit

P: Number of polarities (dimension unit: g)

Model	TSH-175B	TSH-240B	TSH-310B	TSH-400B	TSH-600B
Weight	$94 \times P + 65$	$190 \times P + 65$	$232 \times P + 65$	$375 \times P + 65$	$669 \times P + 65$