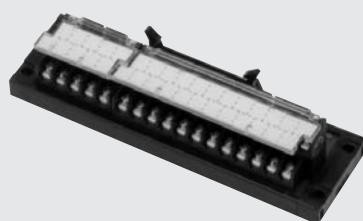


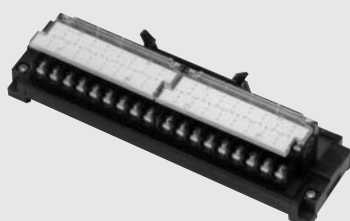
# Interface Terminal Blocks

## TS-312 / 314

TS-312H



TS-312HR



TS-314H



### ■ Features

- Printed circuit board is used for connections between the terminal side and connector side, and thus, disengages erroneous wiring.
- The high efficiency connector detachable and free from fall-out, promises firm connection and easy handling.
- In combination with the 10P, 18P or 24P terminal blocks, the various multiple polarities can be configured for the connector terminal blocks.
- Both panel mounting type and DIN rail mounted type are available.
- Space saving by using the small-sized 2-deck terminal blocks.
- User friendly designs such as the terminal protection cover that can be opened/closed without being removed from the main body, and the name tags that can be used for its both sides.

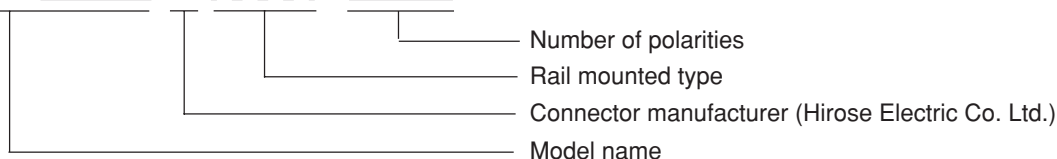


#### NOTICE

- A part of the printed circuit board is exposed. Do not get up with a conductive substance.
- Unless otherwise mentioned, the dimensions are indicated in "mm" in this book.

## Model Designation

TS - ※1 H ※2 ※3



※1

Code	Pitch between Terminals	Terminal Screw
312	7.62mm	M3 × 6
314	8.6mm	M3.5 × 8

※2

Designate with **R** when requiring the rail mounting type for TS-312H.

※3

Model	Number of polarities
312	20P, 34P, 36P, 40P, 50P, 60P, 64P
314	20P, 34P, 40P, 50P, 60P

Manufacturer	Number of Polarities of Terminal Block	Number of Polarities of Connector	Model Name by Connector Manufacturer	
			Connector on Main Body	Connector on Cable *
Hirose Electric Co. Ltd. HRS	20P	20P	HIF3BA-20PA-2.54DSA	HIF3BA-20D-2.54R
	34P	34P	HIF3BA-34PA-2.54DSA	HIF3BA-34D-2.54R
	36P			
	40P	40P	HIF3BA-40PA-2.54DSA	HIF3BA-40D-2.54R
	50P	50P	HIF3BA-50PA-2.54DSA	HIF3BA-50D-2.54R
	60P	60P	HIF3BA-60PA-2.54DSA	HIF3BA-60D-2.54R
	64P	64P	HIF3BA-64PA-2.54DSA	HIF3BA-64D-2.54R

\* Prepare connector for the cable side as it is not attached to the product.

## Ratings and Specifications

Item \ Model	TS-312	TS-314
Rated Insulation Voltage	125V "JIS C 0704 Table 6 and 8: Pollution level 1 in Micro Environment Conditions" Refer to page ????	
Rated Current Capacity	500mA continuous (at 25°C)	
Matching Wire	1.25mm <sup>2</sup> for Terminal Block	2mm <sup>2</sup> for Terminal Block
	Flat ribbon cable for Connector	
Terminal Screw	M3 × 6 Self-up screw with square interleaf (Recommended torque: 0.6 ~ 0.9N·m)	M3.5 × 8 Self-up screw with square interleaf (Recommended torque: 1.0 ~ 1.3N·m)
Pitch between Terminals	7.62mm	8.6mm
Insulation Resistance	100MΩ or more (by 500V DC megohmmeter) among Live parts and Live parts-Ground each	
Withstand Voltage	500V AC for 1 minute among terminals, 2000V AC for 1 minute, between Live parts-Ground	
Operating Environment	Within the range -10 ~ +40°C, 45 ~ 85%RH (No freezing or condensation)	
Standard Conformity	JIS C 2811 Industrial Terminal Blocks	

## Materials

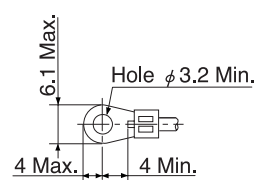
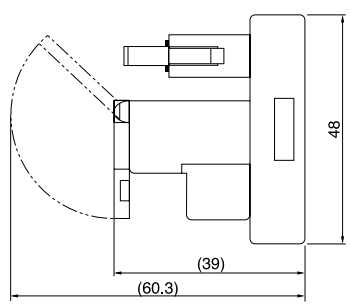
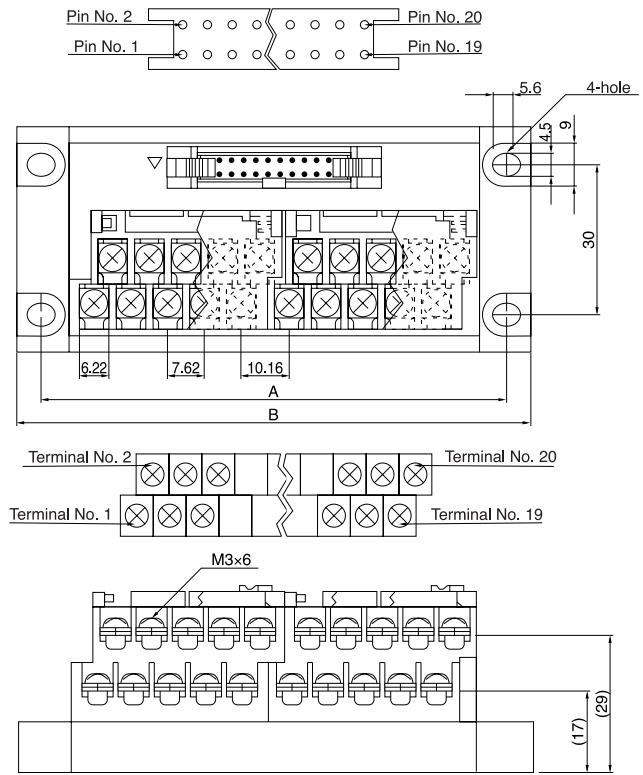
Item \ Model	TS-312	TS-314
Insulation of Terminal Blocks	PBT resin (Black)	UL94V-0
Terminal Protection Cover	Polycarbonate resin (Transparent)	
Base	Denaturized Polyphenylether resin (Black)	UL94V-0
End Segment	Denaturized Polyphenylether resin (Black)	UL94V-0
Terminal Screw	Carbon steel (Nickel plated)	Carbon steel (Galvanized and chromate treatment)
Terminal	Brass (Tin plated)	
PCB (Substrate)	Glass Epoxy plate	

### Weight (Unit: g)

Model \ Polarities	20P	34P	36P	40P	50P	60P	64P
TS-312H	Approx. 98	Approx. 155	Approx. 160	Approx. 183	Approx. 224	Approx. 265	Approx. 281
TS-312HR	Approx. 104	Approx. 161	Approx. 166	Approx. 189	Approx. 230	Approx. 271	Approx. 287
TS-314H	Approx. 150	Approx. 230	—	Approx. 269	Approx. 330	Approx. 397	—

# ■ Dimensions

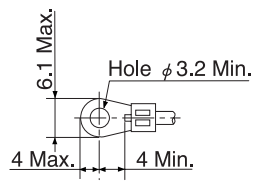
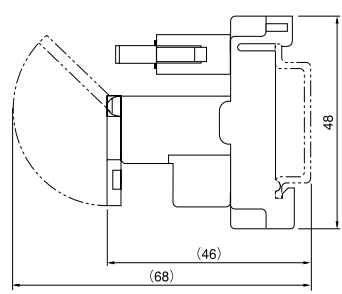
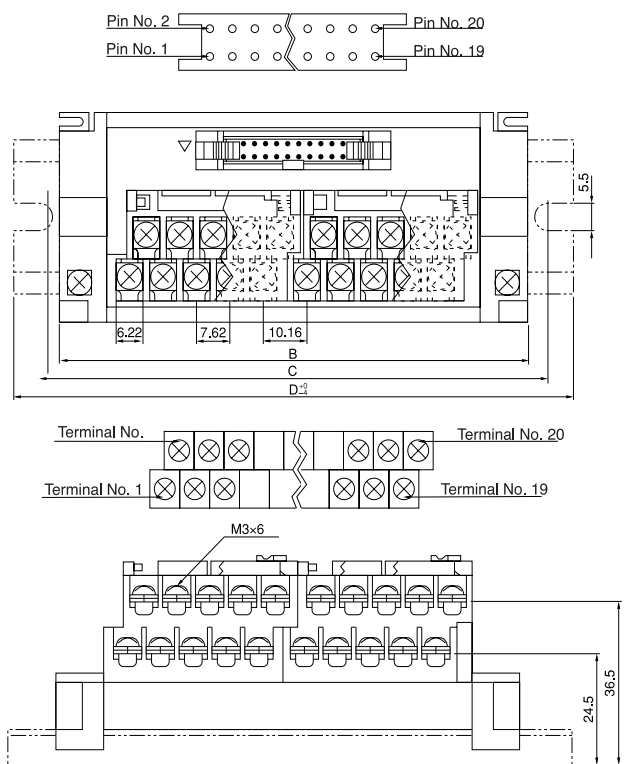
## ▼ TS-312H



● Dimensions (Unit: mm)

Polarities	20P	34P	36P	40P	50P	60P	64P
A	99	152	160	180	221	261	272
B	108	161	169	189	230	270	281

## ▼ TS-312HR



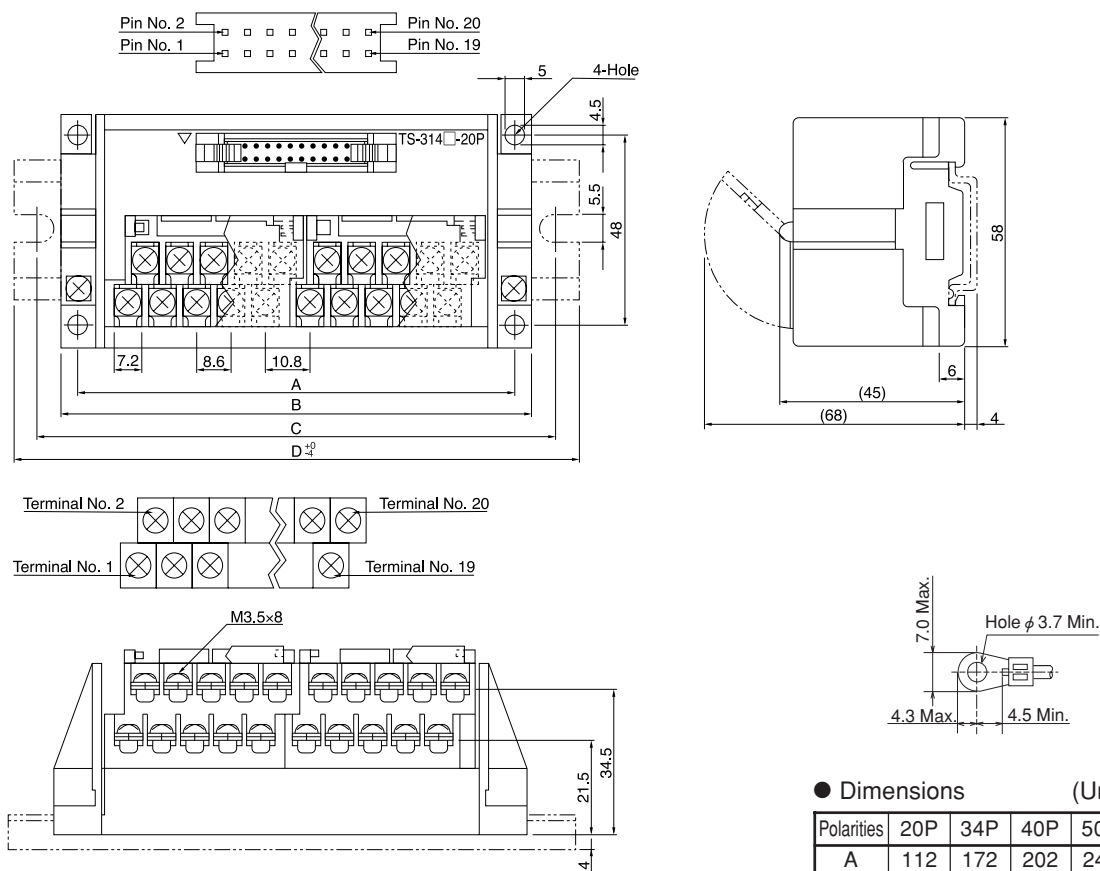
● Dimensions (Unit: mm)

Polarities	20P	34P	36P	40P	50P	60P	64P
B	108	161	169	189	230	270	281
C	120	180	180	210	240	285	300
D	135	195	195	225	255	300	315

•The rail is AR-LH.

## ■ Dimensions

## ▼ TS-314H



- The rail is Model AR-LH.

● Dimensions (Unit: mm)

Polarities	20P	34P	40P	50P	60P
A	112	172	202	247	293
B	120	180	210	255	301
C	135	195	225	270	315
D	150	210	240	285	330

### ● Pattern Connection Diagram

