

KHE/KTE/KRE/KBE-24



■ Specifications

Item	Model	KHE-24	KTE-24		KRE-24	KBE-24
Rated Voltage		24V DC $\pm 10\%$	100V AC $\pm 10\%$ 110V AC $\pm 10\%$	200V AC $\pm 10\%$ 220V AC $\pm 10\%$	48V DC $\pm 10\%$ 100V DC $\pm 10\%$ 110V DC $\pm 10\%$	24V AC $\pm 10\%$ * 48V AC/DC $\pm 10\%$ 100V AC/DC $\pm 10\%$ 110V AC/DC $\pm 10\%$
Rated Current		20mA	25mA	13mA	18mA	18mA
Insulation Resistance		100M Ω or more between live parts and ground (unit display box) measured by 500V DC megohmmeter				
Withstand Voltage		2000V AC for 1 minute between live parts and ground (unit - display box)				
Heat Resistance		For 2 hours at $-25 \pm 3^{\circ}\text{C}$ and 2 hours at $55 \pm 3^{\circ}\text{C}$				
Humidity Resistance		For 96 hours at $40 \pm 2^{\circ}\text{C}$ and 95% RH				
Vibration Resistance		3-dimensional vibration for 1 hour with a sweep time of 1 minute (amplitude: 0.4mm, frequency: 50Hz, and acceleration: 2G)				
Reverse Voltage		400V				
Operating Environment		Temperature: $-10\sim 40^{\circ}\text{C}$, Humidity: 45~85% RH (No freezing or condensation)				
Shock Resistance		3-dimensional shock of 500m/s ² to 6 surfaces, 5 times				
Lighting Color		Milky White (W), Red (R), Green (G), Orange (O), Yellow (Y)				
Panel Thickness		1~5mm: Screw clamp C		3~5mm: Snap clamp H-V		
Wiring		3 \times 6 screws (torue: 0.6~0.9N·m)	M3.5 \times 10 screws (torque: 1.0~1.3N·m)			
Weight		48g	116g		86g	86g

* Only a bridge circuit is possible for the 24V AC circuit configuration.

■ Materials

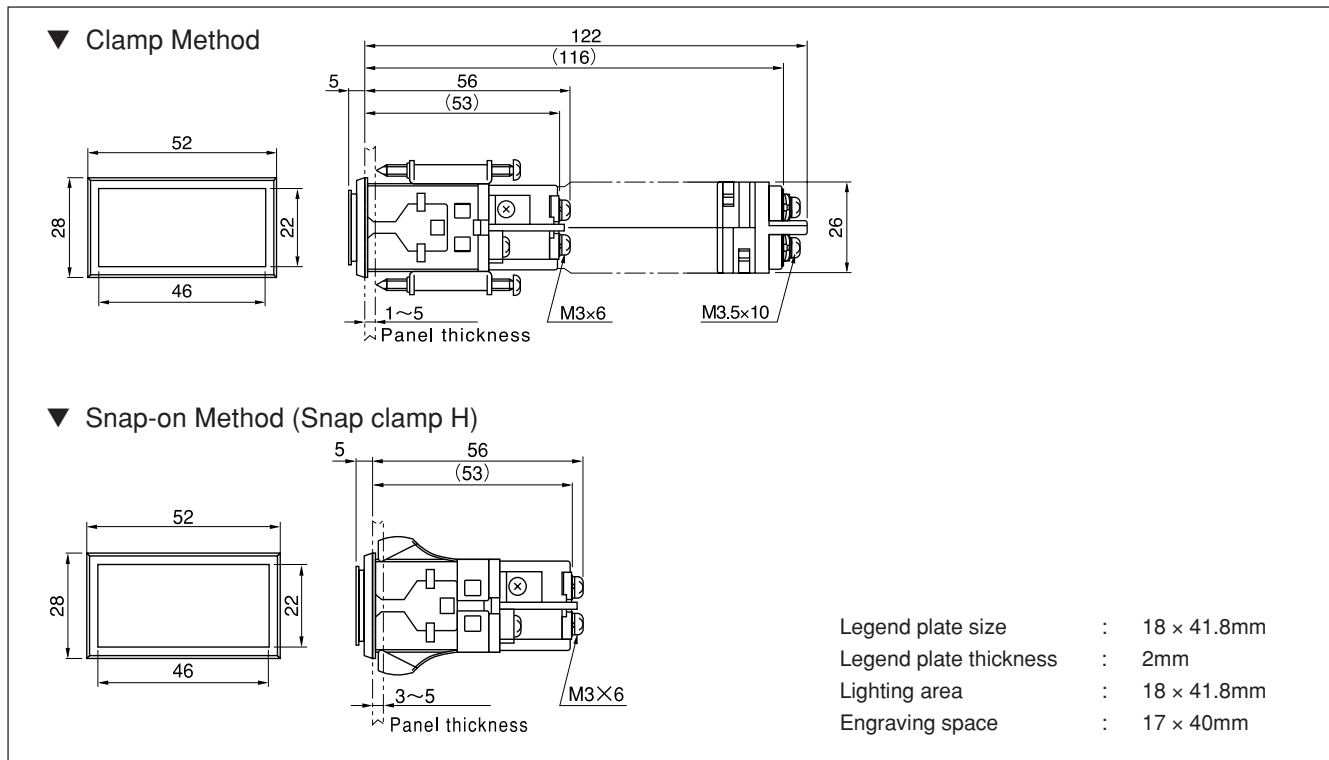
Item	Model	KHE-24	KTE-24	KRE-24	KBE-24
Lens		Polycarbonate resin	(transparent)	UL94V-2	
Legend Plate		Acrylic resin	(milky white)	thickness: 2mm	
Filter		Acrylic resin	(transparent, red, green, orange, yellow)	thickness: 1mm	
Case		Polycarbonate resin	(black)	UL94V-2	
Reflector		Polycarbonate resin	(white)		
Terminal Screws		Carbon steel	(zinc plated with chrome treatment)	M3.5 \times 10 (M3 \times 6 only for KHE-24)	
Screw Clamp C		Steel sheet	(zinc plated with chrome treatment)		
Fixing Screws		Carbon steel	(zinc plated with chrome treatment)	M3.5 \times 40	
Snap Clamp H-V		Stainless steel			



NOTICE

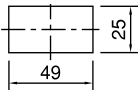
- When used in a circuit with induced or leakage current, the LED may unintentionally light. To prevent this malfunction, insert a resistor parallel to the indicator terminal.
- Use ET/ER/EB-7-2 adaptors for KTE/KRE/KBE.
- When using models with a transformer, resistor, or bridge, use the Screw Clamp C.
- Lighting colors can not be changed by replacing only the color filter. Please order the complete LED Unit (LED unit, lens, legend plate, and color filter).
- Unless otherwise mentioned, all dimensions are indicated in "mm" in this book.

■ Dimensions

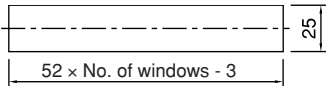


■ Panel Cut Dimensions

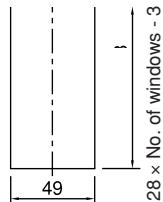
When mounting a single unit



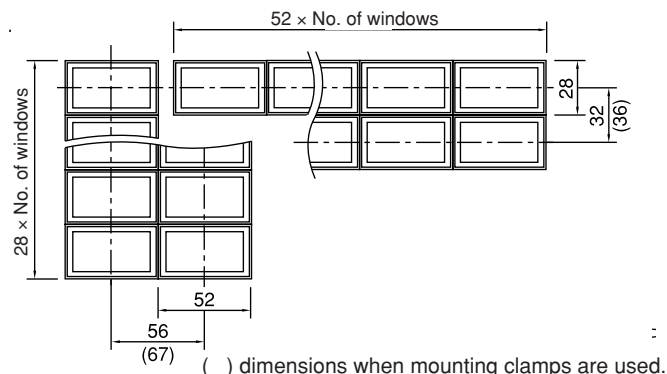
When mounting horizontally



When mounting vertically



■ Mounting Pitch Dimensions



■ Mounting

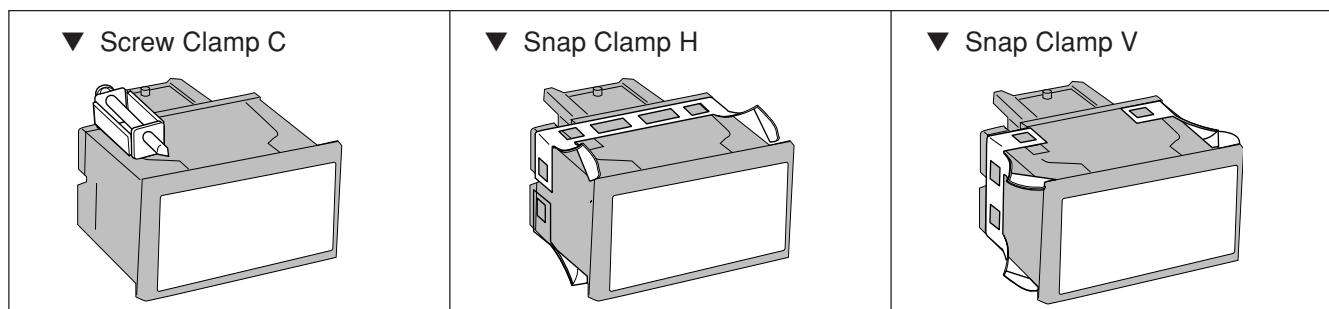
Clamp

Use this method (with screw clamp C) when mounting transformer/resistor types.

- Always remove transformer/resistor from the unit before mounting onto the control panel.
- Insert the unit from the front of the control panel. From the back, screw tightly by using mounting clamp C. Recommended torque is 0.15~0.2N·m.

Snap-On

Insert the unit from front side of control panel. The unit will snap into position.



Accessories & Replacement Parts

LED Units

■ Model Designation

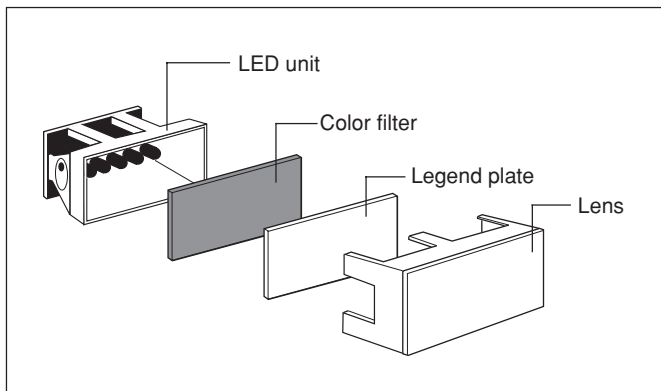
UA - 24H ※1

Lighting Color
Model Name

※1

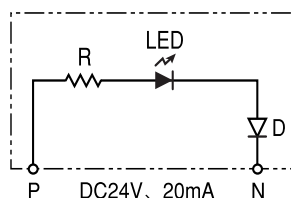
Code	Lighting Color
W	Milky white
R	Red
G	Green
O	Orange
Y	Yellow

■ Structure of LED Unit



■ LED Unit Circuit Diagram

LED refers to the installation of 6 LEDs.



LED : Light Emitting Diode
R : Resistor
D : Protective Diode